



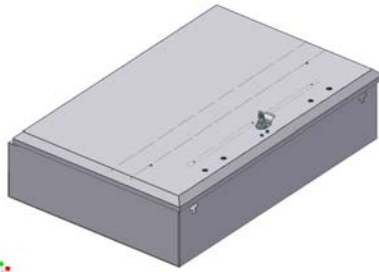
INSTALLATION INSTRUCTIONS

TOYOTA FJ CRUISER ROOF CARGO RACK STORAGE BOX MOUNTING KIT #154 (USED WITH PART #146)

This product will only mount to the OEM FJ Cruiser Factory rack.
It will not fit FJ Cruisers without the OEM factory rack.

Please read and fill out the enclosed warranty registration card to activate your warranty.

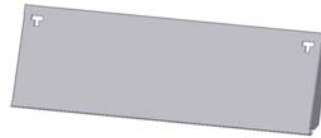
PARTS LIST



146 Box



#23 Right Fairing bracket



#18 Fairing



#24 Left Fairing bracket



#22 (2) Mounting bracket A



#20 (2) Mounting bracket B



#21 (4) Clamp brackets



Rubber Seal Roll
(Comes with #146)

SHIPPING PACKAGE CONTENTS



#19.4 (8) 5/16-18 X 1 1/4" Grd 8 Bolt



#19.3 (12) 5/16-18 X 1" Grd 8 Bolt



#19.6 (4) 5/16-18 X 1" Grd 5 Bolt



#19.1 (24) 5/16 Lock-Nut



#19.2 (32) 5/16 USS Washer (Wide OD)



#19.5 (16) 5/16 SAE Washer (Narrow OD)

TOOLS REQUIRED

- (2) Ratchets
- (1) Extension
- (1) 1/2" Deep well socket
- (1) 1/2" socket

PLEASE READ ALL INSTRUCTIONS THOROUGHLY BEFORE STARTING INSTALLATION.

Warning! Check the OEM roof rack ratings for maximum load capacity less the weight of the Tuffy storage box and Tuffy mounting kit (60#), and any other items on the rack to calculate the Tuffy storage box load weight capacity. Clearance: Check vehicle clearance issues, adds 10 3/4" height.

1. Install rubber seal on lid. The rubber seal should be installed on the 45 degree angle where it meets with the box when closed. (SEE FIGURE 1)
2. Install the (2) #22 mounting brackets A and (2) #20 mounting bracket B using (8) 5/16-18 x 1" Grade 8 bolts #19.3, (8) 5/16 Lock-Nuts #19.1, and (16) USS Washers #19.2 (Wide OD). Leave them loose enough so the overall bracket width can be adjusted by sliding them. (See Figure 2)
3. Assemble the fairing by fastening the #24 Left fairing bracket and #23 Right Fairing bracket to #18 Fairing using (4) 5/16-18 x 1" Grade 5 bolts #19.6 (Silver color), (4) 5/16 Lock-Nuts #19.1, and (8) 5/16 USS Washers #19.2 (Wide OD). The fairing must be mounted to the side of the box with the lid hinge; NOT the side where the lid opens or the box and lid may be damaged when operating the vehicle. (See Figure 2)
4. Fasten the Fairing assembly to the mounting brackets A and B previously mounted on the box using (4) 5/16-18 x 1" Grade 8 bolts #19.3, (4) 5/16 Lock-Nuts #19.1, and (8) 5/16 USS Washers #19.2 (Wide OD). Leave them loose enough so the fairing assembly can be adjusted side to side by sliding it. (See Figure 2)
5. Place the box assembly on the vehicle and slide the mounting brackets to fit against the original FJ Cruiser roof rack bars. Make sure the box and fairing are also centered on the vehicle. (See Figure 3)

Warning! The side of the box with the hinge must be facing the front of the vehicle and the side of the box with the lid opening must be facing the rear. Any other orientation can cause damage to the box and lid and create a safety hazard when operating the vehicle (See Figure 3).

6. Fasten the box assembly to the original FJ roof rack bars using the (4) #21 Clamp brackets, (8) 5/16-18 x 1 ¼" Grade 8 Bolts #19.4, (8) 5/16 Lock Nuts #19.1, and (16) 5/16 SAE Washers #19.5 (Narrow OD). Be sure to insert the (2) inside mounting bolts on the end of the box with the fairing from the inside toward the outside as illustrated. (See Figure 3)
7. Tighten all the hardware previously left loose. This includes all the hardware fastening the mounting bracket A and B to the box and the hardware fastening the fairing assembly to the mounting brackets A and B. (See Figure 2 and 3)
8. Check the lid and latching mechanism to be sure that both latches are engaging and working properly.
9. The entire box assembly can be removed from the vehicle by only removing the fasteners installed in step #6.

Warning! Always make sure the lid is secured shut by both latches before operating the vehicle. The latching mechanism and all the mounting fasteners should be checked and tightened monthly.

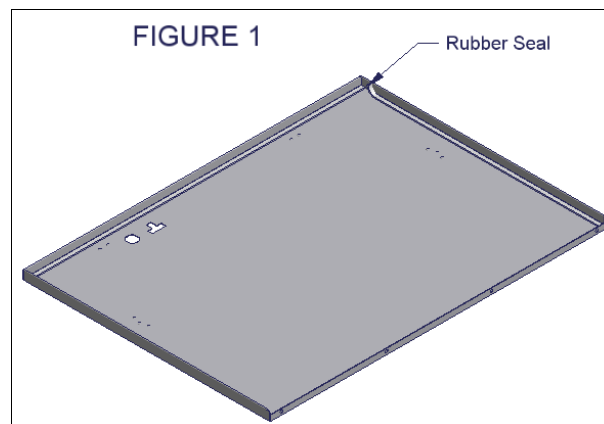


FIGURE 2

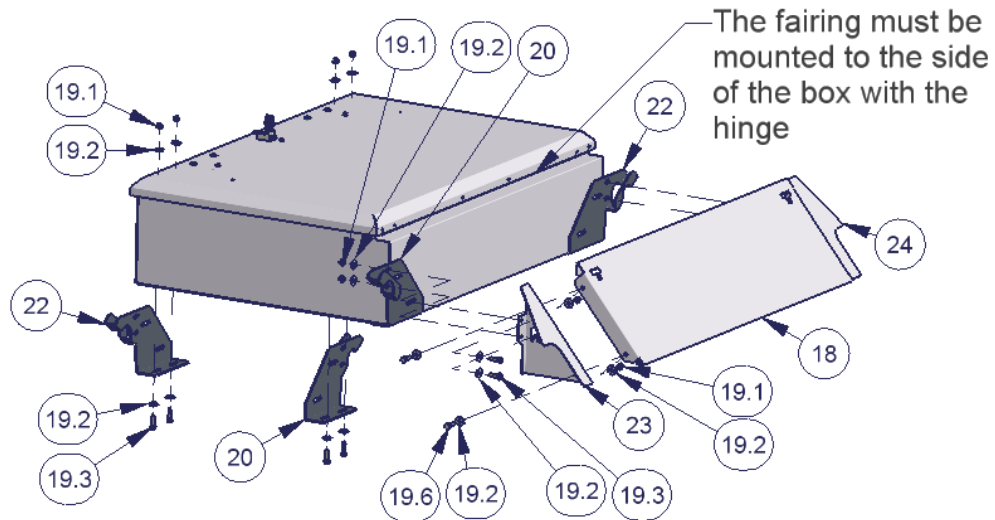
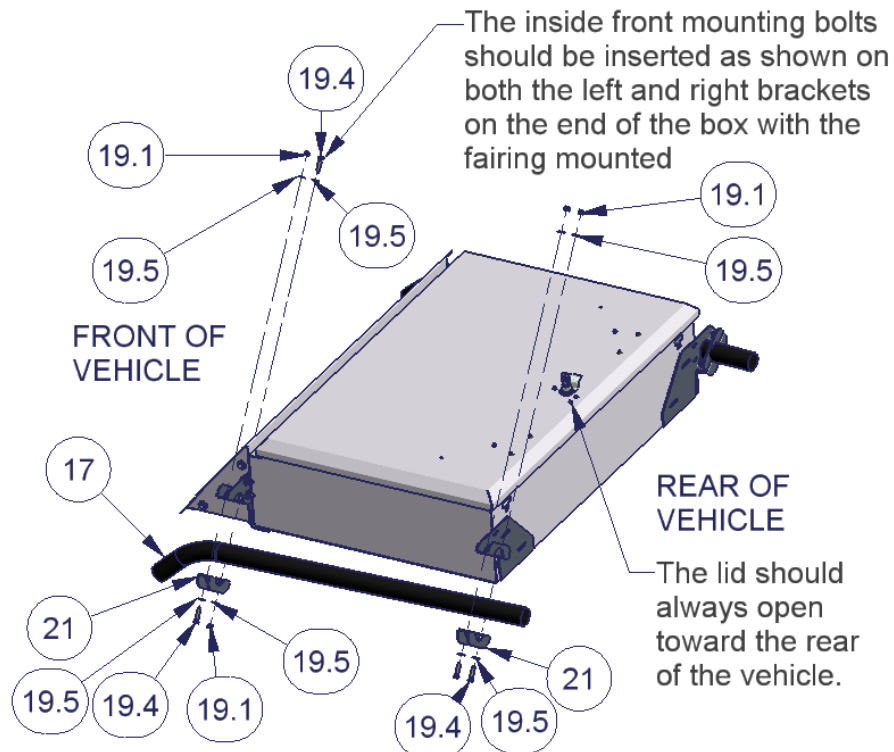


FIGURE 3



ATTENTION:

FREQUENT LUBRICATION IS NECESSARY ON THE LOCKING SYSTEM

The pushbutton lock contains an “O” ring seal to protect the interior from dust and water. If this mechanism is not lubricated regularly it will become difficult to operate and it may not return to its home position preventing the key from operating the lock. If this happens simply pull up on the pushbutton to manually bring it back to its home position. Lubricate the pushbutton with a light lubricant such as silicone spray. The pushbutton may have to be periodically disassembled and cleaned.

Call (970) 564-1762 for Technical Support